

## Exhibit C

Agriculture Buffer and Perimeter Path Bretton Woods Arboretum, Art  
and Poetry Trail Philosophy

## Agricultural Buffer and Perimeter Path

### Bretton Woods Arboretum, Art and Poetry Trail

May 6, 2022

Bretton Woods Arboretum, Art and Poetry Trail is a thoughtfully designed environment to entice residents and the public to explore, exercise, and mingle. Located on the perimeter of our aging in-place neighborhood and accessible to homeowners through numerous intersecting paths, it seeks to foster multi-generational connections more commonly available in other Davis neighborhoods. The interior path and exterior trail system is specifically designed to draw Bretton Woods residents outdoors meet others and reduce the sense of isolation and loneliness that occurs as we age. It's planned to encourage residents to walk and stroll in a pleasant, interesting year-round attractive environment.

The west and north sides of the channel itself are being transformed into an oak tree forest, once common throughout Northern California. Sculptures will be installed along the nearly one-mile art and poetry trail that meanders along the channel's edge interspersed with trees and plantings. It is expected that Bretton Woods residents will form and participate in a Friends of the Arboretum activities. The curated artworks will celebrate nature, encourage contemplation, and enhance the transformed landscape. Between the art nodes will be thoughtful and seasonally changed poetry reading stations.

Each sculpture area will provide seating and a table for picnics. The Perimeter Trail is intended to attract visitors of all ages, including school aged children on class trips, allowing an opportunity for interaction with Bretton Woods residents and children, thus minimizing the sense of isolation for our residents.

Inspired by the University of California, Davis Arboretum and the University of Utah Red Butte Garden, Bretton Woods Arboretum and Art trail is a destination for residents, family members, and visitors to exercise, stroll, picnic, and enjoy the combined beauty of nature and art.

Introducing

# The Acorns to Oaks Foundation

Created to fund an oak forest in the proposed West Davis Active Adult Community



It is human nature to reflect on our lineage and how we will be remembered.

A community with monuments, parks or streets dedicated to the people who have profoundly given to the city, seen or unseen, marks a true respect for their contribution to the community.

The Acorns to Oaks Foundation is a way  
for each of us to create a legacy and be honored.



*"It's not about  
what it is,  
it's about what it  
can become."*

*- Dr. Suess, The Lorax*

## VISION:

To transform the agricultural - landscape buffer along the west and north side of the proposed West Davis Active Adult Community into an oak tree forest. The oaks would be available for "adoption" by residents of the City of Davis providing an opportunity to create a local legacy.

Collaboration with Tree Davis, the local organization committed to enhancing and expanding our urban forest by teaching the people of our community to plant and care for trees, would ensure the groves are properly planted and cared for.

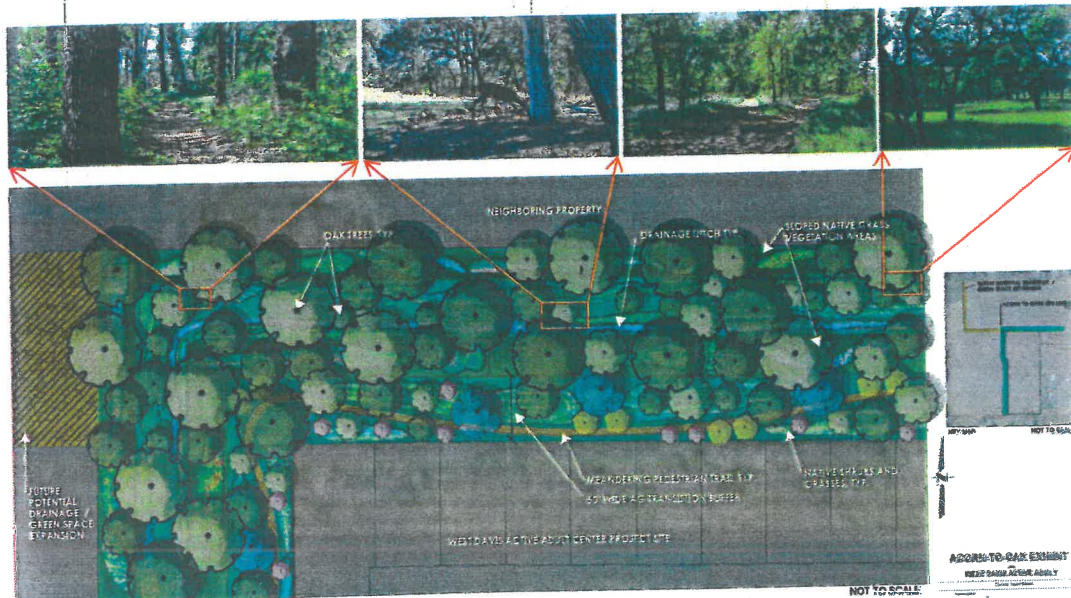
**For more information, visit [westdavisactive.com](http://westdavisactive.com)**

Bidwell Park - Chico  
Nearest northern California example

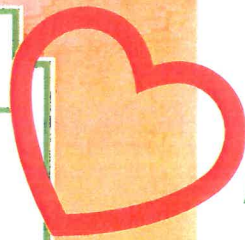


## IMPLEMENTATION:

1. It includes the West Davis Active Adult Community 100-foot drainage area on the West and North sides of the community and extended future expansion and widening in the area further West along adjacent properties.
2. West Davis Active Adult Community, in collaboration with Tree Davis, will develop the basic land plan where trees and groves will be placed including natural walking paths and visitor access to view and enjoy the individual trees and groves.
3. Long term management by Tree Davis and West Davis Active Adult Community Home Owners Association along with the Davis Acorns to Oaks Foundation.
4. Initial Plantings: West Davis Active Adult Community will fund planting oaks in the name of each of its initial residents including residents of the senior apartments. This results in initially planting nearly 600 oak trees of various sizes.
5. All current and future residents of Davis, students and Alumni of UC Davis will be invited to fund additional trees and groves named for their respective families.
6. Name tags for individual oak trees, plaques for groves and monument sized maps will be installed along the public walking path adjacent to the neighborhood to identify the contributors and where their respective oak trees are located.



# YES ON L



# SHOWCASING DAVIS ART

The West Davis Active Adult Community features the largest public art display ever proposed in Davis.

11 individual spaces dedicated to displaying, admiring and appreciating the artists of our city.



Paid for by Yes on L Committee Davis - 1408158

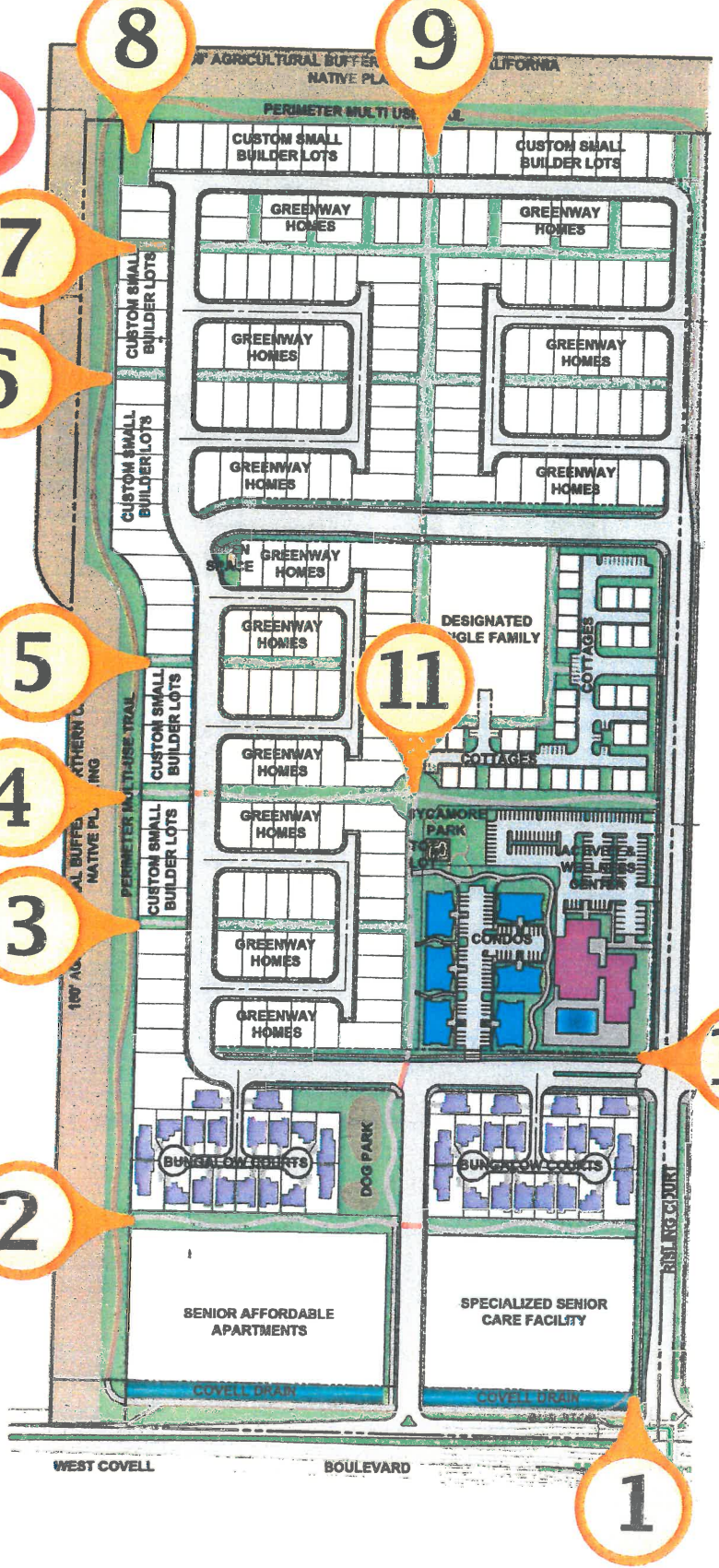
Learn More at [www.WestDavisActive.com](http://www.WestDavisActive.com)

# YES ON L

WEST DAVIS ACTIVE  
ADULT COMMUNITY



Davis  
Caring for Our Own



8

9

7

6

5

4

3

11

10

2

1

# POETRY IN THE GARDEN

## Be Inspired By The Natural World!

You will find a number of Poetry Boxes scattered throughout the Garden exhibiting both well known and lesser known poetry fitting with the changing seasons.

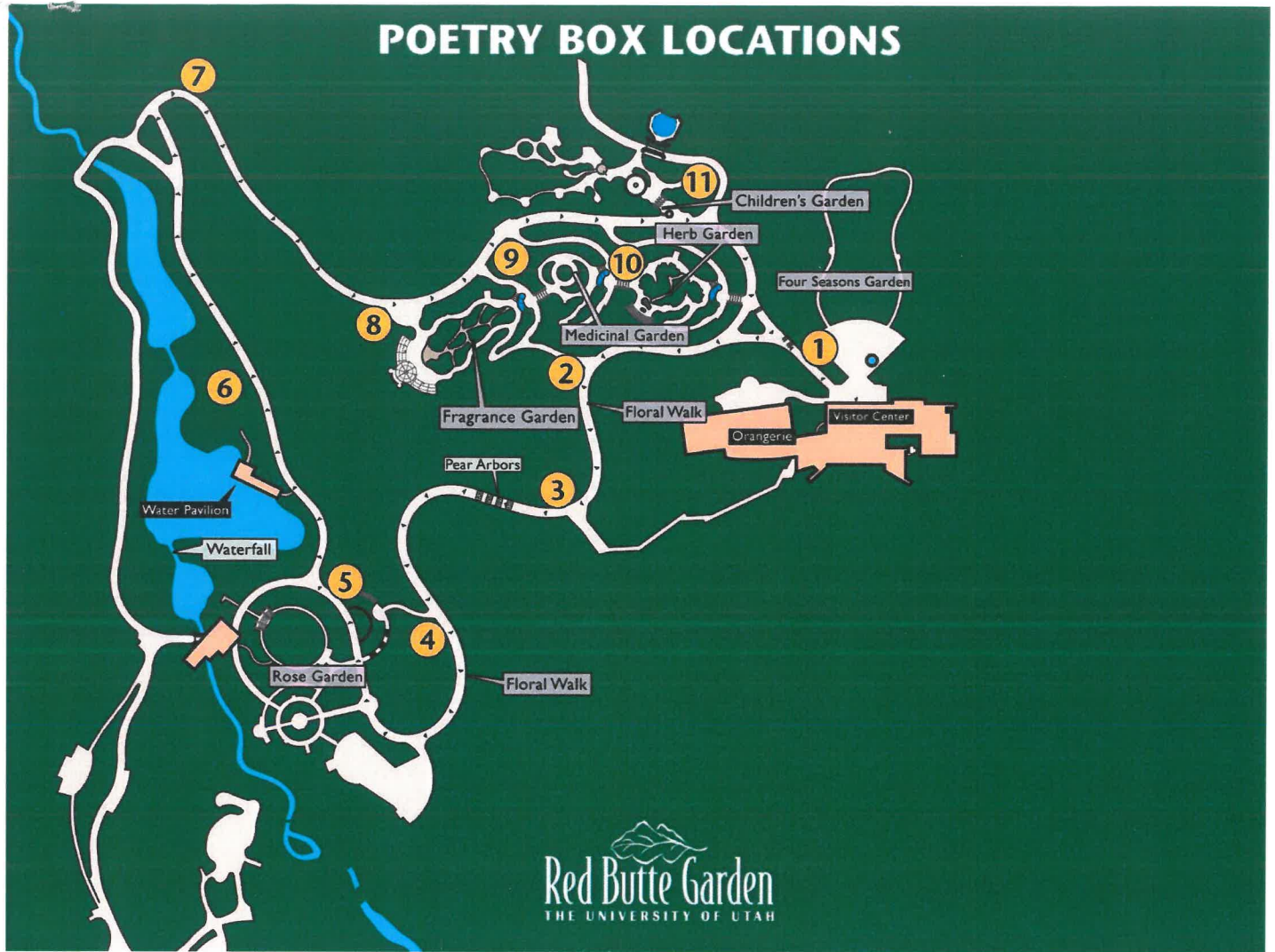
During April we celebrate National Poetry Month by featuring eleven local poetry contest winners. Look for our **Call-For-Poetry Contest** (<http://redbuttegarden.org/events/call-poetry/>) in January.

**CLICK HERE** (<http://redbuttegarden.org/events/garden-poetry-walk/>) for more information about our April Poetry Walk.



*Look for Poetry Boxes like these throughout the Garden!*













Fairmont  
SUSTAINABLE GARDENS FOR LIFE

## PLANTING FOR THE PLANET

### BEE SUSTAINABLE GARDEN



Doing our part to help the bees by adding to the shrinking inventory of flower-rich habitats. Bees pollinate flowers, providing a beautiful harvest of fruits, seeds and vegetables.

Did you know that one out of every three bites of your food depends on a pollinator?

That's because about 150 crops grown in the U.S. depend on pollinators, including apples, avocados, blueberries, citrus, melons, peaches, plums, pumpkins and squash.

